

### Matrax Strong Plank

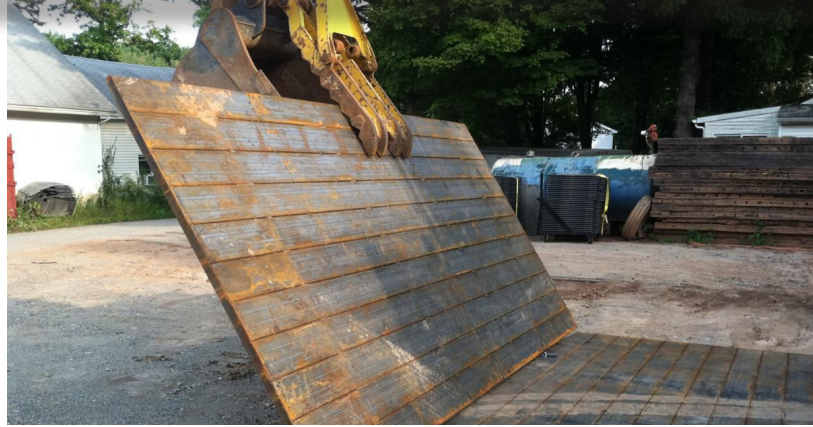
**YOUR LIGHTWEIGHT ALTERNATIVE HAS ARRIVED.**

#### FEATURES/SPECS

- Patented profile, roll formed 65 KSI steel
- Durable & long lasting, 15-20 years
- Deflects less than .01" with a load of 450 psi
- High strength-to-weight ratio
- Embossed anti-skid, self-weathering work surface
- Corrugated underside to grip the subgrade and prevent sliding
- Simple link & coupler connection system

#### APPLICATIONS

Matrax Strong Plank can be utilized for many applications including temporary access road construction, working platforms, heavy equipment staging, temporary parking lots and flooring within temporary structures, or as liner protection during oil & gas drilling operations.



| Specification                      | Standard                     |
|------------------------------------|------------------------------|
| Standard Size                      | 7.21' x 14.42' x 1.94" thick |
| Net Working Surface                | 104 ft <sup>2</sup>          |
| Weight                             | 1,400 lbs                    |
| Load Capacity (Shear X-Direction)  | 546.08 kips                  |
| Load Capacity (Shear Y-Direction)  | 981.95 kips                  |
| Load Capacity (Moment X-Direction) | 109.46 kip-ft                |
| Load Capacity (Moment Y-Direction) | 182.38 kip-ft                |

*Engineering data and installation handbook available upon request.*